

**Anti- RRM1 / RNR-R1 antibody, rabbit polyclonal**

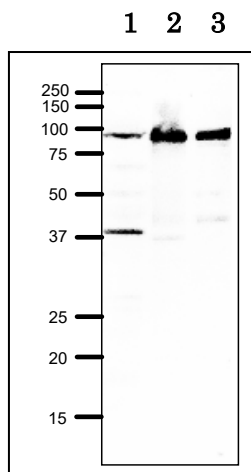
69-100 100 µg

**Shipment and Storage:** Shipped at 4°C, and aliquot and store at -20°C**Reactivity:** Xenopus, human, mouse, rat, hamster**Immunogen:** Recombinant His-tagged RRM2 (182-717 amino acids) of *Xenopus laevis*.**Applications:**

1. Western blotting ( 1/1,000-1/2,000 dilution)
2. Immunofluorescence staining (1/100 dilution)

**Form:** IgG (Protein A affinity purified) 1 mg/ml in PBS, 50% glycerol, Filter-sterilized**Background:** RRM1 (Ribonucleoside-diphosphate reductase 1) catalyzes the biosynthesis of deoxyribonucleotides from the corresponding ribonucleotides and provides the precursors necessary for DNA synthesis. RRM1 consists of 797 amino acids with molecular mass of 90,833.**Data Link** UniProtKB/Swiss-Prot [Q6GM88](#) (Q6GM88\_XENLA), [P23921](#) (RIR1\_HUMAN)**Reference :** This product was used in the following publication.

Takada S. et al. Identification of ribonucleotide reductase protein R1 as an activator of microtubule nucleation in *Xenopus* egg mitotic extracts. *Mol Biol. Cell* 11,: 41734187 (2000) PMID: [11102516](#) **WB, IF (Xenopus)**

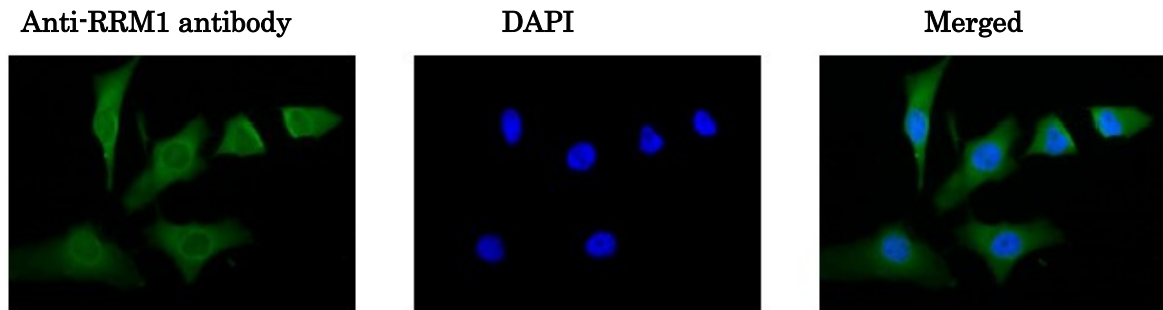
**Fig 1, Western blot of RRM1 at endogenous level.**1. *Xenopus* egg extract

2. Hela cell extract

3. Chinese Hamster Ovary cell extract.

12.5% SDS-PAGE, blotting overnight at 15 V, wet system

First antibody at 1/1,000 dilution. Second antibody, goat anti-rabbit IgG at 1/10,000 dilution.



**Fig.3 Immunofluorescence staining of HeLa cells with anti-RRM1 antibody**

Cells were fixed with 4% PFA and permeabilized with 0.25% Triton X-100.

The antibody was used at 1/100 dilution. Localization is mainly cytoplasm.