

anti-Rad6 antibody, rabbit polyclonal

70-020 100 µg

Shipping and Storage: Shipped at 4°C or -20°C. Upon arrival, spin-down and store at -20°C.

Immunogen: Human Rad6B full-length recombinant protein

Form: 1mg/ml in PBS- with 50% glycerol, filter-sterilized. Azide- and carrier-free.

Purity: Affinity purified with the immunogen conjugated to agarose

Reactivity: Reacts with Rad6A and Rad6B of human mouse, rat and hamster. Not tested in other species

Applications

- 1) Western blotting (1,000~2,000 fold dilution)
- 2) Immunoprecipitation (assay dependent)
- 3) Immunofluorescent staining (assay dependent)

Other applications have not been tested

Background: Resume of DNA synthesis, which was halted by various physical and chemical factors,

was triggered by repair system including Rad6. Rad6 (152a.a, 17.3kDa) is the

ubiquitin-conjugated enzyme E2A, and complex with two Rad18 molecules, ubiquitin

ligase E3, to ubiquitinate PCNA by utilizing poly-ubiquitin chain that HLTF-UBC13

synthesized and they are involved in translesion DNA synthesis (TLS) and template switch (TS). Two isoforms of Rad6, Rad6A and Rad6B differs in only 6 amino acids. They also play an important role in epigenetic transcriptional regulation by catalyzing the monoubiquitination of histone H2B at Lys-120 .

Data Link:

UniProtKB/Swiss [P49459](#) (UBE2A/Rad6A_HUMAN)

UniProtKB/Swiss [P63146](#) (UBE2B/Rad6B_HUMAN)

Reference : This product was used in the following

Publication

Masuyama S. et al. "Regulated expression and dynamic changes in subnuclear localization of mammalian Rad18 under normal and genotoxic conditions" Genes to Cells 10: 753-762 (2005) PubMed [16098139](#) **WB, IF**

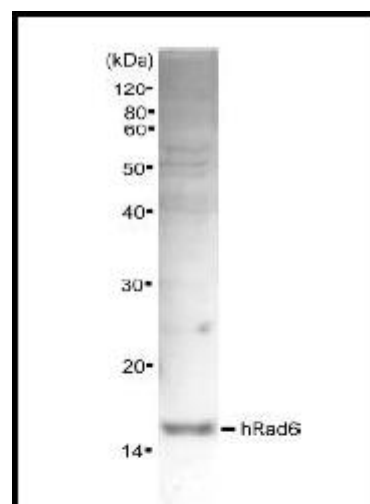


Fig.1 Western blot analysis of Rad6 in the whole cell extracts of HeLa cell (10 µg) with anti-Rad6

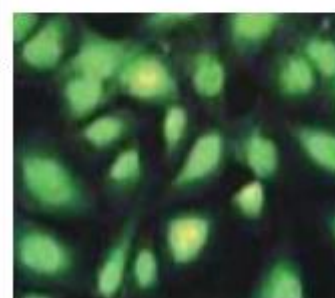


Fig.2 Rad6 protein in GM637 cells were stained by indirect immunostaining method with the Rad6 antibody