

## Anti-Ssb2 / Rpa2 (*S. pombe*) antibody, rabbit polyclonal

63-037      100 µg

**Shipping and Storage:** Shipped at 4°C or -20°C and store at -20°C.

**Immunogen:** Recombinant His6 *S. pombe* Ssb2 protein (full size, 1-279 amino acids).

**Form:** 2.0 mg/ml in PBS- with 50% glycerol, Sterilized by ultrafiltration. IgG fraction purified with Protein A.

**Reactivity:** *S. pombe* Ssb2 protein

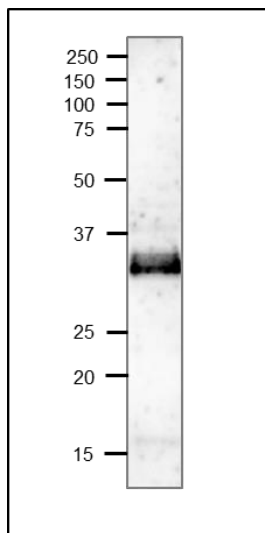
### Applications

1. Western blot (1/1000-1/2000)
2. Chromatin Immuno-Precipitation (1/500)

**Background:** Ssb2 (synonym:Rpa2) binds to single-strand DNA and play a role in DNA replication, recombination and repair. Length, 279 amino acids. Molecular mass, 30.4 kDa. The protein undergoes phosphorylation at two Ser and two Thr.

**Subcellular location:** Nucleus

**Data Link:** UniProtKB [Q92373](https://www.uniprot.org/entry/Q92373) (RFA2\_SCHPO)



**Fig.1 Western Blot of Ssb2 protein**

Crude extract of *S.pombe* strain MP111 (8 µg) was separated on 12.5% SDS-PAGE and blotted to PVDF membrane. Membrane was blocked with 5% skim milk. Anti-Ssb2 antibody was used at 1/1,000 dilution and the second antibody, Goat anti-rabbit IgG, HRP-conjugated was used at 1/10,000 dilution. Anti-Sld5 antibody was used at 1/500 dilution. Second antibody (goat anti-rabbit IgG antibody HRP-conjugated (ab97051) was used at 1/10,000 dilution. *S. pombe* extract,

The antibody detects a 30kDa band, corresponding to the size predicted from the protein sequence.

**References:**This product has been described in Ref 1 and used in the following publications.

- 1.Yabuuchi H et al. Ordered assembly of Sld3, GINS and Cdc45 is distinctly regulated by DDK and CDK for activation of replication origins.EMBO J. 2006, Oct;25(19):4663-74. PMID: [16990792](https://pubmed.ncbi.nlm.nih.gov/16990792/). **WB, ChIP (*S. pombe*)**
- 2.Nitani N et al. Mcm4 C-terminal domain of MCM helicase prevents excessive formation of single-stranded DNA at stalled replication forks. [Proc Natl Acad Sci U S](https://doi.org/10.1073/pnas.0608100103)

- [A](#). 2008 Sep 2;105(35):12973-8. PMID: [18753627](#) ChIP (*S. pombe*)
3. Handa T et al. DNA polymerization-independent functions of DNA polymerase epsilon in assembly and progression of the replisome in fission yeast. [Mol Biol Cell](#). 2012 Aug;23(16):3240-53. PMID: [22718908](#) ChIP (*S. pombe*)

**Related Products.**

- 63-020 Anti-Mcm2 (*S. pombe*) antibody
- 63-021 Anti-Mcm3 (*S. pombe*) antibody
- 63-022 Anti-Mcm5 (*S. pombe*) antibody
- 63-023 Anti-Mcm6 (*S. pombe*) antibody
- 63-024 Anti-Mcm7 (*S. pombe*) antibody
- 63-030 Anti-Psf1 (*S. pombe*) antibody
- 63-032 Anti-Psf3 (*S. pombe*) antibody
- 63-035 Anti-Sld5 (*S. pombe*) antibody
- 63-041 Anti-Orc2 (*S. pombe*) antibody
- 63-043 Anti-Orc4 (*S. pombe*) antibody