

## Anti-Psf3 (*S. pombe*) antibody, rabbit serum

63-032 100 µl

**Shipping and Storage:** Shipped at 4° or -20°C and store at -20°C.

**Immunogen:** Recombinant His6-Psf3 protein (full size ) of *S. pombe*.

**Form:** Rabbit antiserum added with sodium azide, 0.09 %.

**Reactivity:** *S. pombe* Psf3 protein (18.5k).

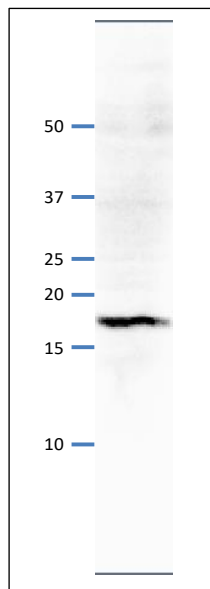
### Applications:

Western blot (1/1000-1/2000)

**Background:** Psf3 is a component of GINS complex which is required for the initiation and elongation stages of DNA replication.

**Subcellular location:** Nucleus

**Data Link:** UniProtKB [Q9UTC3](#) (*S. pombe* Psf3)



**Fig.1 Western Blot of Psf3 protein**

Anti-Psf1 antibody was used at 1/500 dilution. Second antibody (goat anti-rabbit IgG antibody HRP-conjugated, ab97051) was used at 1/10,000 dilution. *S. pombe* extract, 8 µg. Signal enhancer, Can Get Signal (TOYOBO), was used in primary and secondary anti-body reactions.

The antibody detects a protein band with molecular mass of 18 kDa, corresponding to the mass predicted from the amino acid sequence.

**References:** This product has been used in the following publications.

Pai CC et al. GINS inactivation phenotypes reveal two pathways for chromatin association of replicative alpha and epsilon DNA polymerases in fission yeast. *Mol. Biol. Cell.* 2009, Feb;20(4):1213-22. PMID: [19109429](#). **WB: *S. pombe***

Yabuuchi H et al. Ordered assembly of Sld3, GINS and Cdc45 is distinctly regulated by DDK and CDK for activation of replication origins. *EMBO J.* 2006, Oct;25(19):4663-74. PMID: [16990792](#). **WB: *S. pombe***

**Related Products:**

- 63-020 Anti-Mcm2 (*S. pombe*) antibody
- 63-021 Anti-Mcm3 (*S. pombe*) antibody
- 63-022 Anti-Mcm5 (*S. pombe*) antibody
- 63-023 Anti-Mcm6 (*S. pombe*) antibody
- 63-024 Anti-Mcm7 (*S. pombe*) antibody
- 63-030 Anti-Psf1 (*S. pombe*) antibody.
- 63-035 Anti-Sld5 (*S. pombe*) antibody
- 63-037 Anti-Ssb2 / Rpa2 (*S.pombe*) antibody
- 63-041 Anti-Orc2 (*S. pombe*) antibody
- 63-043 Anti-Orc4 (*S. pombe*) antibody
- 63-050 Anti-Cdc45 Sna41 (*S. pombe*) antibody