

## Anti-Mcm7 (*S. pombe*) antibody, rabbit polyclonal

63-024      100 µg

**Shipment and Storage:** Shipped at 4°C or -20°C and store at -20°C.

**Immunogen:** Recombinant His6 1-207 amino acids of *S. pombe* Mcm7.

**Form:** 2.0 mg/ml in PBS- with 50% glycerol, filter sterilized. IgG fraction purified with Protein A.

**Reactivity:** *S. pombe* Mcm7 protein

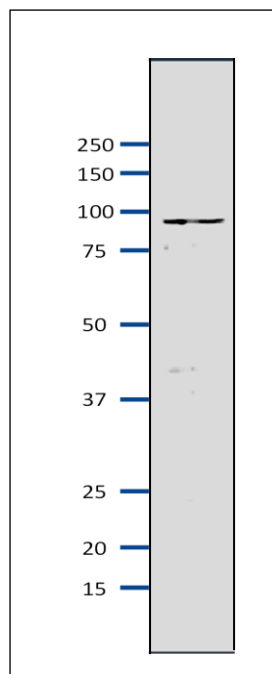
### Applications:

1. Western blot (1/1,000-1/2,000)

**Background:** Mcm7 acts as a component of mcm2-7 complex which is the putative replicative helicase essential for 'once per cell cycle' DNA replication initiation and elongation in eukaryotic cells. Calculated molecular mass: 85.6 kDa

**Subcellular location:** Nucleus

**Data Link:** UniProtKB [75001](#)(*S. pombe* Mcm7)



**Fig.1 Western blot of Mcm7 protein in *S. pombe* crude extract**  
Anti-Mcm7 antibody was used at 1/2000 dilution. Second antibody (goat anti-rabbit IgG antibody, HRP-conjugated, ab97051) was used at 1/10,000 dilution. *S. pombe* extract, 8 µg.

**References:** This product has been used in the following publications.

Yamada Y et al. A Novel Intermediate in Initiation Complex Assembly for Fission Yeast DNA Replication. Mol Biol Cell. 2004, Aug;15(8): 3740-50. PMID: [15194812](#). **WB: *S. pombe***

**Related Products.**

63-020 Anti-Mcm2 (*S. pombe*) antibody

63-021 Anti-Mcm3 (*S. pombe*) antibody

63-022 Anti-Mcm5 (*S. pombe*) antibody

63-023 Anti-Mcm6 (*S. pombe*) antibody

63-030 Anti-Psf1 (*S. pombe*) antibody

63-032 Anti-Psf3 (*S. pombe*) antibody

63-035 Anti-Sld5 (*S. pombe*) antibody

63-037 Anti-Ssb2 Rpa2 antibody

63-041 Anti-Orc2 (*S. pombe*) antibody

63-043 Anti-Orc4 (*S. pombe*) antibody