

Anti-Psm1 (*S. pombe*) antibody, rabbit polyclonal

63-137 100 µl

Storage: Ship at 4°C, and aliquot and store at -20°C. Avoid repeated freeze-thaw cycle.

Specific reactivity: Specific to *S. pombe* Psm1

Immunogen : GST-Psm1 (N-terminal 631 amino acids) fusion protein

Applications:

1. Immunoblotting (dilution: 1/300~1/1,000)
2. Immunoprecipitation

Form: Rabbit antiserum added with 0.05 % sodium azide

Background: *Schizosaccharomyces pombe* Psm1 is a component of protein complex called cohesin which is required for sister chromatid cohesion during cell cycle and in DNA repair. The cohesion complex apparently forms a large proteinaceous ring within which sister chromatids can be trapped. At anaphase, the complex is cleaved and dissociates from chromatin, allowing sister chromatids to segregate. *S. pombe* cohesin complexes are composed of the Psm1 and Psm3 heterodimer attached via their hinge domain, Rad21 which link them, and Psc3, which interacts with Rad21. Cohesin subunits are enriched in broad centromere region.

Data Link: Swiss-Prot [O94383](#)

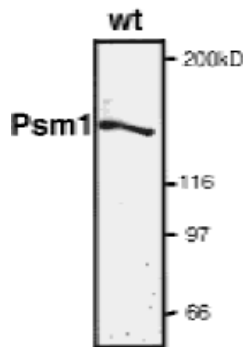


Fig.1 Detection of endogenous level of Psm1 protein by western blotting.

Psm1 showed the expected 140 kD band.

References: This antibody has been used in the following publications.

1. Tomonaga T *et al* "Characterization of fission yeast cohesin:essential anaphase proteolysis of Rad21 phosphorylated in the S phase." *Genes Dev* **14**: 2757-2770 (2000) PMID: [11069892](#). **WB (S. pombe)**
2. Sakai A *et al* "Condensin but not cohesin SMC heterodimer induces DNA reannealing through protein-protein assembly." *EMBO J* **22**:2764-2775 (2003) PMID: [12773391](#). **WB (S. pombe)**
3. Murayama Y, Uhlmann F. Biochemical reconstitution of topological DNA binding by the cohesin ring. *Nature*. 2014 Jan 16;505(7483):367-71. PMID: [24291789](#). **WB (S. pombe)**