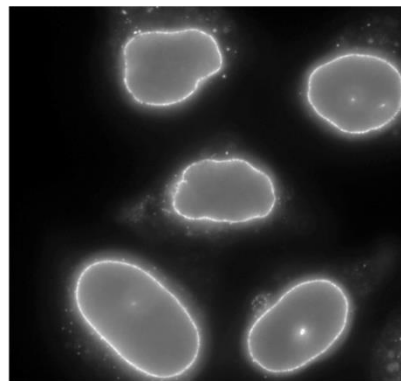
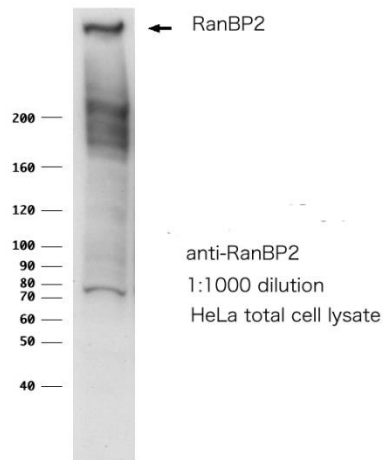


## Anti-RanBP2 antibody, rabbit polyclonal

<b>Product code</b>	71-003
<b>Size</b>	100 µl
<b>Storage</b>	-20°C
<b>Concentration</b>	0.5 mg/ml
<b>Buffer</b>	PBS <sup>-</sup> with 50% glycerol
<b>Purity</b>	Affinity-purified with immunogen.
<b>Immunogen</b>	Synthetic peptide corresponding to 3 times-repeated sequences in RanBP2; SKAPKSGFEGMFTKKE
<b>Isotype</b>	Rabbit IgG
<b>Reactivity</b>	Human, mouse and rat. Not tested for other species
<b>Special notes</b>	N/A
<b>Application</b>	1. Western blotting (~ 1/1,000 dilution) 2. Immunoprecipitation 3. Indirect immuno-staining of RanBP2 in cells
<b>Background</b>	RanBP2 was identified as a protein that interacts with small GTP-binding protein, Ran, and forms a large multiprotein complex involved in many biological processes such as mRNA processing, nuclear transport, cell cycle control and postmitotic nuclear reassembly. The protein is identified by Western blotting as an apparent molecular mass of 360 kD (see below). It is involved in nucleation of microtubules and controls of cell growth by interacting with many protein factors.
<b>Data Link</b>	UniProtKB/Swiss-Prot <a href="#">P49792</a> (RBP2_HUMAN)
Please note: All products are FOR RESEARCH USE ONLY. NOT FOR USE IN DIAGNOSTIC PROCEDURES. NOT FOR MILITARY USE.	

**Data Images:** 71-003 Anti-RanBP2 antibody, rabbit polyclonal



Para formaldehyde fixed HeLa cells stained with anti RanBP2 (551-2) (1:2000 dilution)

**Reference** This product has been used for the following reference.

1. Yokoyama N *et al* "A giant nucleopore protein that binds Ran/TC4" *Nature* **376**:184-188 (1995)  
PMID: [7603572](https://pubmed.ncbi.nlm.nih.gov/7603572/)
2. Yasuda K. Nuclear envelope localization of Ran-binding protein 2 and Ran-GTPase-activating protein 1 in psoriatic epidermal keratinocytes. *Exp Dermatol.* 2014 Feb;23(2):119-24. PMID: 24438026.