

Anti-EID1 antibody, mouse monoclonal (#26)

Product code	71-185
Size	100 µg
Storage	-20°C
Concentration	1.0 mg/ml
Buffer	PBS ⁻ with 50% glycerol
Purity	Purified IgG fraction with protein A from hybridoma cell culture medium.
Immunogen	Synthetic peptide containing amino acids 1-19 of human EID1 protein.
Isotype	Mouse IgG2a _κ
Reactivity	Human EID1 protein. Not tested for other species.
Special notes	N/A
Application	1. Western blotting (~1 µg/ml). 2. Immunofluorescence staining (~1 µg/ml). Other applications have not been tested.
Background	<i>EID1</i> (EP300 interacting inhibitor of differentiation 1) encodes a 21 kDa protein, which interacts with RB1 and EP300 and acts as a repressor of MYOD1 transcription. EID1 inhibits EP300 and CBP histone acetyltransferase activity. It may be involved in coupling cell cycle exit to the transcription of genes required for cellular differentiation.
Data Link	UniProtKB/Swiss-Prot Q9Y6B2 (EID1_HUMAN)
Please note: All products are FOR RESEARCH USE ONLY. NOT FOR USE IN DIAGNOSTIC PROCEDURES. NOT FOR MILITARY USE.	

Data Images: 71-185 Anti-EID1 antibody, mouse monoclonal (#26)

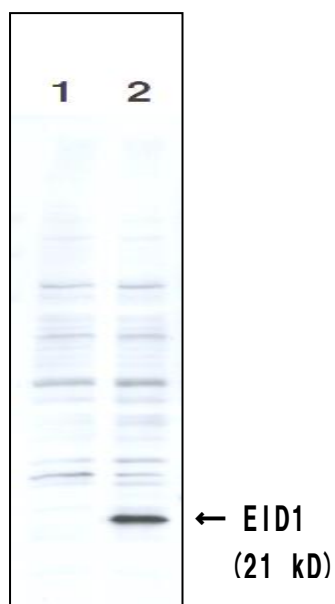


Fig 1 Identification of the EID1 protein by the monoclonal antibody clone #26 by Western blotting. Crude cell extracts of MCF7 cells (breast cancer cell line) transfected with control vector pCMV1 (lane 1) or the EID1 expression vector pcDNA3/EID1 (lane 2) were analyzed by Western blotting using anti-EID1 antibody clone #26 as the primary antibody and HRP-conjugated-mouse IgG as the secondary antibody. The EID1 protein was identified as a 21 kDa protein band as shown by an arrow.

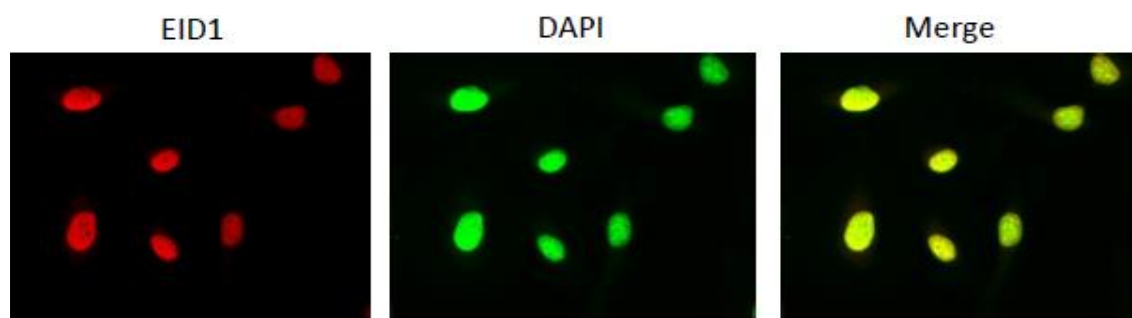


Fig. 2. Immunofluorescent staining of EID1 protein by anti-EID1 antibody (clone 26) in HeLa cells. EID1 protein is localized in nuclei.

Hela cells grown

Fixation of the cells in 4% paraformaldehyde over night

Permeabilization in 0.25% Triton X-100/PBS⁻ for 10 min

Blocking in 1.5% BSA/PBS for 30 min

Incubation over night in anti-EID1 antibody (clone 2) diluted to 1/1,000 by blocking buffer

Incubation for 60min in 2nd antibody, Goat anti-rabbit IgG conjugated with Alex 488 (1:1,000 dilution)

Nuclei were stained with DAPI

References: This antibody has not yet been used in publication

Related Product

71-190 Anti-EID1 antibody, mouse monoclonal (#2)