

## Anti-HP1 $\alpha$ /CBX5 antibody, rabbit polyclonal, affinity purified

70-221      100  $\mu$ g

**Shipping and Storage:** Shipped at 4°C or -20°C and store at -20°C.

**Form:** Affinity purified IgG 0.37 mg/ml in 0.12 M sodium phosphate buffer (pH 7.4), 50% glycerol, sterilized by filtration, azide free

**Reactivity:** Human. Not tested with other species.

### Applications

- 1) Western blotting (1/1,000~1/3,000) (Fig.1)
- 2) Immunofluorescence staining (1/200~ 1/1,000)

**Background:** Heterochromatin protein 1 (HP1) is a major component of heterochromatin and plays a role in assembly of various proteins on chromatin and gene silencing. The HP1 family is evolutionally conserved, with members in fungi, plants and animals but not prokaryotes, and there are multiple members within the same species. The HP1 family proteins are encoded by a class of genes known as the chromobox (CBX) genes. In humans, HP1 $\alpha$  is encoded by the *Chromobox homolog 5* (CBX5) gene located on chromosome 12q13.13. HP1 $\alpha$  has been observed to interact directly or indirectly with several non-histone proteins with a wide variety of functions (1).

The product is prepared by immunizing rabbit with the synthetic peptide CEDAENKEKETAKS corresponding to the amino acid sequence 179-191 of human HP1 $\alpha$  and purified by affinity purification with the peptide. The antiserum was prepared by the direction of Prof. T. Haraguchi.

**Data Link** UniProtKB/Swiss-Prot [P45973](#) (CBX5\_HUMAN)

### References

1. Lomber G *et al* "The Heterochromatin Protein 1 family"  
*Genome Biol* **7**: 228 Review (2006) PMID: [17224041](#)
2. Kametaka A *et al* "Interaction of the chromatin compaction-inducing domain (LR domain) of Ki-67 antigen with HP1 proteins"  
*Genes Cells* **7**: 1231-1242 (2002) PMID: [12485163](#)
3. Wang F *et al* "The assembly and maintenance of heterochromatin initiated by transgene repeats are independent of the RNA interference pathway in mammalian cells"  
*Mol Cell Biol* **26**: 4028-4040 (2006) PMID: [16705157](#)

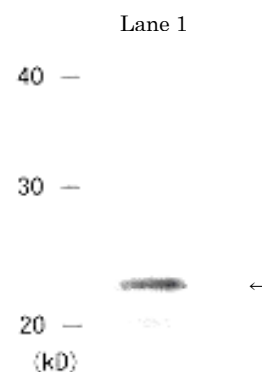


Fig. Detection of HP1 $\alpha$  protein by Western blotting.  
Lane 1: Crude extract of MCF7 cells  
The antiserum was diluted 1,000 fold before use.

**Related product:** [#70-223](#) Anti-HP1 $\beta$  antibody, [#70-225](#) Anti-HP1 $\gamma$  antibody

BioAcademia, Inc. Tel. 81-72-643-4660 Fax. 81-72-643-4701 [info@bioacademia.co.jp](mailto:info@bioacademia.co.jp) <http://www.bioacademia.co.jp/en/>