

**Anti-Cdk1 / Cdc2 (Xenopus) antibody, rabbit polyclonal**

**69-003 100 µg**

**Shipping and Storage:** Shipped at 4°C or -20°C and store at -20°C.

**Immunogen:** Synthetic peptide corresponding to C-terminal region of Xenopus Cdk1 protein (C-KSSLPDNQIRN) conjugated with KLH

**Form:** 2.0 mg/ml in PBS- with 50% glycerol

**Purity:** Purified IgG

**Reactivity:** Xenopus, human

**Applications**

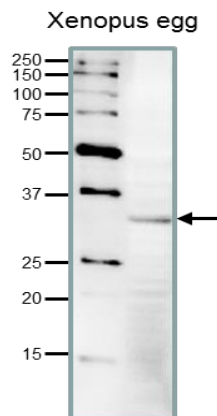
- 1) Western blotting (1/200-1/500 dilution)
- 2) Immunoprecipitation (1/100 dilution)

**Background:** Cdk1(cyclin-dependent kinase1) plays a key role in the control of the eukaryotic cell cycle. It is required in higher cells for entry into S-phase and mitosis. Component of the kinase complex that phosphorylates the repetitive C-terminus of RNA polymerase II. Phosphorylation at Thr-14 or Tyr-15 inactivates the enzyme, while phosphorylation at Thr-161 activates it. Molecular mass is 34,506

**Data Link:** UniProtKB [P35567](#) (CDK1A\_XENLA)

**Reference:** This antibody was described in Ref.1 and used in Ref 1 and 2.

- 1.Masuda H and Shibata T. Role of gamma-tubulin in mitosis-specific microtubule nucleation from the Schizosaccharomyces pombe spindle pole body. [J Cell Sci.](#) 1996 Jan;109 ( Pt 1):165-77. **WB, IP**
- 2.Kimura K et al. Phosphorylation and activation of 13S condensin by Cdc2 in vitro. [Science.](#) 1998 Oct 16;282(5388):487-90. **WB**



**Figure. Detection of endogenous Cdk1 in Xenopus egg extract by Western blot.**

Extract (30 µg) of Xenopus laevis eggs was used for western blot analysis and the antibody was used at 1/200 dilution. The molecular mass is 34.5 kDa