

Anti-Psm1 (*S. pombe*) antibody, rabbit serum

63-137 100 µl

Shipping and Storage: Shipped at 4°C or -20°C and store at -20°C.

Immunogen : GST-Psm1 (N-terminal 631 amino acids) fusion protein

Form: Rabbit antiserum added with 0.05 % sodium azide

Reactivity: Specific to *S. pombe* Psm1

Applications:

1. Immunoblotting (dilution: 1/300~1/1,000)
2. Immunoprecipitation

Background: *Schizosaccharomyces pombe* **Psm1** is a component of protein complex called cohesin which is required for sister chromatid cohesion during cell cycle and in DNA repair. The cohesion complex apparently forms a large proteinaceous ring within which sister chromatids can be trapped. At anaphase, the complex is cleaved and dissociates from chromatin, allowing sister chromatids to segregate. *S. pombe* cohesin complexes are composed of the **Psm1** and Psm3 heterodimer attached via their hinge domain, Rad21 which link them, and Psc3, which interacts with Rad21. Cohesin subunits are enriched in broad centromere region.

Data Link: Swiss-Prot [O94383](#)

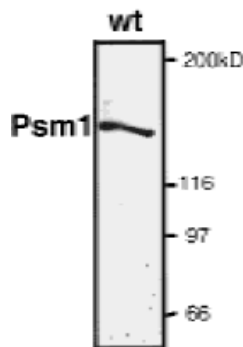


Fig.1 Detection of endogenous level of Psm1 protein by western blotting.

Psm1 showed the expected 140 kD band.

References: This antibody has been used in the following publications.

1. Tomonaga T *et al* "Characterization of fission yeast cohesin:essential anaphase proteolysis of Rad21 phosphorylated in the S phase." *Genes Dev* **14**: 2757-2770 (2000) PMID: [11069892](#). **WB (S. pombe)**
2. Sakai A *et al* "Condensin but not cohesin SMC heterodimer induces DNA reannealing through protein-protein assembly." *EMBO J* **22**:2764-2775 (2003) PMID: [12773391](#). **WB (S. pombe)**
3. Murayama Y, Uhlmann F. Biochemical reconstitution of topological DNA binding by the cohesin ring. *Nature*. 2014 Jan 16;505(7483):367-71. PMID: [24291789](#). **WB (S. pombe)**