

## Anti-ALEU antibody, rabbit polyclonal

81-120 100 µg

**Shipping and Storage:** Shipped at 4°C or -20°C and store at -20°C. Do not freeze.

**Immunogen:** Recombinant His6-Aleu protein of *Arabidopsis thaliana*.

**Form:** 2 mg/ml in PBS<sup>-</sup> with 50% glycerol. Filter-sterilized.

No preservative or carrier protein

**Purity:** IgG fraction purified with protein A from the rabbit antiserum to dVPE.

**Reactivity:** Arabidopsis thaliana

### Applications:

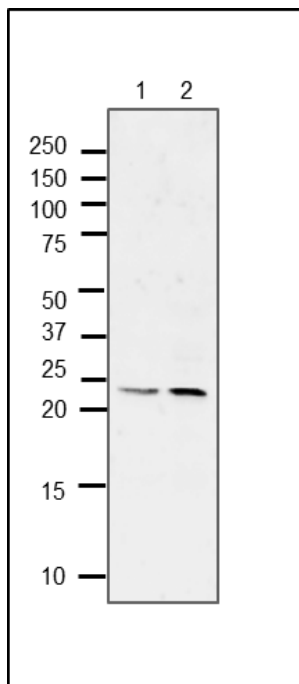
1. Western blotting (1/1,000-1/4,000)

**Background:** Aleu protein may play a role in proteolysis leading to mobilization of nitrogen during senescence and starvation. Catalytic activity: Hydrolysis of proteins, acting as an aminopeptidase (notably, cleaving Arg-Xaa bonds) as well as an endopeptidase

Length 358 amino acids with mass of 38,959 Da. Signal peptide 1-21 a.a. Propeptide : 22-119 a.a.

**Subcellular localization:** Vacuole

**Data Link:** UniProtKB [Q8H166](https://www.uniprot.org/entry/Q8H166) (ALEU\_ARATH)



**Fig.1 Western blot of ALEU protein in Arabidopsis seedlings**

1. Crude extract of 7-day-seedlings of Arabidopsis.
2. Crude extract of 19-day-seedlings of Arabidopsis.

Proteins in the extracts were separated on SDS-PAGE (15-20% gradient gel) and blotted to PVDF membrane. The membrane were blocked with 3% skim milk. The anti-ALEU antibody was used at 1/2,000 dilution and as the second antibody, HRP-conjugated goat anti-rabbit IgG (ab97051) was used at 1/10,000 dilution.

The ALEU protein is synthesized as preproprotein with 39 kDa, the signal peptide of 21 amino acids is removed and the propeptide of N-terminal 119 amino acids is removed in the mature functional protein. The size of apparent molecular mass analyzed by Western blot agrees with the size of mature ALEU protein predicted (24 kDa).

**Reference.** This antibody was described in Ref.1 and used in the following publications.

- 1.Ueda H et al. AtVAM3 is required for normal specification of idioblasts, myrosin cells. [Plant Cell Physiol.](#) 2006 Jan;47(1):164-75. PMID: [16306062](#) **WB (arabidopsis)**
- 2.Takagi J et al. MAIGO5 functions in protein export from Golgi-associated endoplasmic reticulum exit sites in Arabidopsis. [Plant Cell.](#) 2013 Nov;25(11):4658-75. PMID: [24280388](#) **WB (arabidopsis)**

#### **Related Products**

81-110 Anti-TGG1 antibody, rabbit polyclonal

81-111 Anti-TGG2 antibody, rabbit polyclonal

81-121 Anti-At 2S3P antibody, rabbit polyclonal

81-122 Anti-At 2S3M antibody, rabbit polyclonal

81-119 Anti-VSR1 antibody, rabbit polyclonal