

Anti-RuvA antibody, rabbit serum

61-005 100 µl

Shipping and Storage: Shipped at 4°C or -20°C and Store at -20°C

Immunogen: Purified full-size recombinant RuvA protein (2)

Form: Rabbit antiserum added with 0.05% sodium azide

Applications

- 1) ELISA
- 2) Western blotting (x 3,000 dilution) (Fig.1)

Other applications have not been tested.

Background: *E. coli* **RuvA** protein binds specifically to the Holliday structure which is the intermediate of recombination at the late stage of homologous recombination and recombination repair, and forms a complex with RuvB motor protein, allowing the migration of Holliday junction using ATP hydrolysis energy and expands the heteroduplex region. In solution, it forms a tetramer and binds to the cross-like DNA of the Holliday junction from below and above, holding it in between (1, 2).

Using this antiserum in Western blotting, the band of 22kD corresponding to **RuvA** was obtained from the extract of *E. coli* cells (Fig.1).

DataLink UniProtKB/Swiss-Prot [P0A809](#) (RUVA_ECOLI)

References

1. Shinagawa H and Iwasaki H (1996) "Processing the holliday junction in homologous recombination" *Trends Biochem Sci* **21**:107-111 PMID: [8882584](#)
2. Iwasaki H *et al* (1992) "Escherichia coli RuvA and RuvB proteins specifically interact with Holliday junctions and promote branch migration" *Genes Dev* **6**:2214-2220 PMID: [1427081](#)

Related Products:

- [01-007](#) *E. coli* RuvA protein
- [01-009](#) *E. coli* RuvB protein
- [01-011](#) *E. coli* RuvC protein
- [61-007](#) anti-RuvB antibody, rabbit polyclonal
- [61-009](#) anti-RuvC antibody, rabbit polyclonal

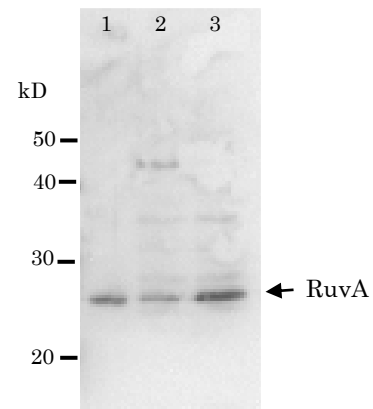


Fig1. Detection of RuvA (22kD) protein by Western blotting using this antibody.
 lane1: RuvA protein 0.8ng
 lane2: *E. coli* AB1157 crude extract
 lane3: *E. coli* AB1157 *lexA* mutant crude extract
 Expression of RuvA is enhanced by *lexA* mutation.