

## Anti-Mrc1 (*S. pombe*) antibody, rabbit serum

63-151 50 µl

**Shipping and Storage:** Shipped at 4°C or -20°C and store at -20°C.

**Immunogen:** Purified recombinant protein containing amino acids 1~317 of Mrc1

**Form:** Undiluted rabbit antiserum added with 0.05 % sodium azide

### Applications

- 1) Western blotting (x 5,000 dilution)
- 2) Immunoprecipitation

**Background:** Mrc1 (Mediator of replication checkpoint 1) is a S-phase checkpoint protein of *Schizosaccharomyces pombe* found at replication forks, required for phosphorylation and activation of Cds1 during DNA replication stress, where it forms a replication pausing complex, and is phosphorylated by Rad3 and Tel1 kinases. The phosphorylated form of Mrc1 is detected by a change in the electrophoretic mobility.

**Data Link** UniProtKB/Swiss-Prot [Q9P7T4](#) (MRC1\_SCHPO)

**Reference :** This product is described and used in reference 1.

1. Zhao H *et al* "Replication checkpoint protein Mrc1 is regulated by Rad3 and Tel1 in fission yeast" *Mol Cell Biol* **23**: 8395-8403 (2003) PMID: [14585996](#)

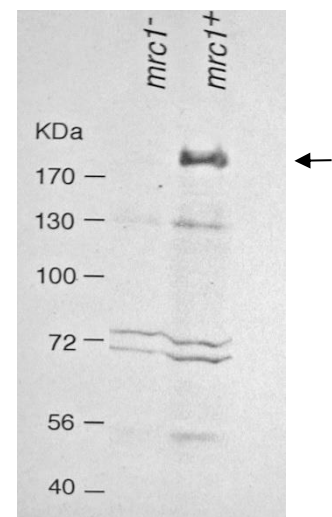


Fig.1 Western blot analysis of Mrc1 in the whole cell extracts.  
Lane 1: *mrc1*<sup>-</sup> strain  
Lane 2: Wild type strain

Please note: All products are FOR RESEARCH USE ONLY. NOT FOR USE IN DIAGNOSTIC PROCEDURES. NOT FOR MILITARY USE.