

Anti-Swi6 (*S. pombe*) antibody, rabbit serum, ChIP grade

63-101 50 µl

Shipping and Storage : Ship at 4°C or -20°C and store at -20°C.

Immunogen: Recombinant full length protein corresponding to *S. pombe* Swi6 aa 1-328

Form: rabbit antiserum added with 0.09% sodium azide

Reactivity: Swi6 protein of *S. pombe*

Applications For the studies of RNAi mechanism

1. Western blotting (x 2,000~10,000 dilution) (Figure) Background noise was reduced with diluted antibody
2. Immunoprecipitation
- 3 Immunoflorescent staining
- 4.Chromatin Immuno-Precipitation

Background: Swi6 protein of fission yeast is a functional and structural homolog of HP1 (Heterochromatin Protein 1) of animals and is involved in the formation of heterochromatin structure by binding to centromere, telomere and silent mating-type locus. It is also involved in silencing the genes and sister chromatid cohesion by binding to histone H3 methylated at Lys9 and the cohesin subunit Psc3.

Data Link UniProtKB/Swiss-Prot [P40381](#) (SWI6_SCHPO)

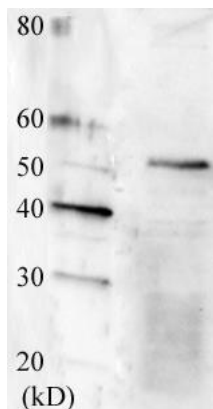


Fig.1 Detection of endogenous Swi6 protein by Western blotting

Sample: Crude extract of *S. pombe* at log phase

The Swi6 protein migrates slower than the calculated molecular mass of 37 kDa.

The antibody was used at 1/2,000 dilution.

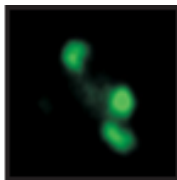


Fig.2 Immunoflorescent staining of Swi6 protin of *S. pombe* cells.

Cells at log phase were fixed with 3 % paraformaldehyde and permeabilized with Zymolyase before treatment with the antibody.

References: This antibody has been used in the following publications.

1. Carlsten JO et al. Mediator promotes CENP-a incorporation at fission yeast centromeres. [Mol Cell Biol.](#) 2012 Oct;32(19):4035-43. PMID: [22851695](#) **ChIP (*S.pombe*)**
2. Sato H et al. Epigenetic inactivation and subsequent heterochromatinization of a centromere stabilize dicentric chromosomes. [Curr Biol.](#) 2012 Apr 24;22(8):658-67. PMID: [22464190](#). **ChIP (*S. pombe*)**

Please note: All products are FOR RESEARCH USE ONLY. NOT FOR USE IN DIAGNOSTIC PROCEDURES. NOT FOR MILITARY USE.