

Anti-Gtr2 (*S. cerevisiae*) antibody, rabbit serum

62-351

100 μ l

Gtr2 (341 amino acids, 38.6 kDa) is the yeast homologue of RagC identified in yeast and classified as a Ras-like small GTPase subfamily. In cytoplasm, GTP-bound Gtr2 forms a heterodimer with Gtr1, which is involved in autophagy through mTOR signal pathway.

Applications

1) Western blotting (500~ 2,000 folds dilution)

Not tested for other applications

Reactivity: Reacts with *S. cerevisiae* Gtr2 protein

Immunogen: Purified Full-length yeast Gtr2 protein fused with GST

Form: Anti-Gtr2 rabbit serum added with 0.05% sodium azide.

Storage: Shipped at 4°C. Upon arrival aliquot and store at -20°C.

Data Link UniProtKB/Swiss-Prot: [P53290](#) (GTR2_YEAST)

References :

1. Sekiguchi T *et al* " A novel human nucleolar protein Nop132, binds to the G proteins, RAG A/C/D" *J. Biol. Chem.* 279,: 8343-8350 (2004) PMID: [14660641](#)
2. Yasemin S *et al* "The Rag GTPases bind raptor and

mediate amino acid signaling to mTORC1" *Science.* 320(5882): 1496-1501 (2008) PMID:

[18497260](#)

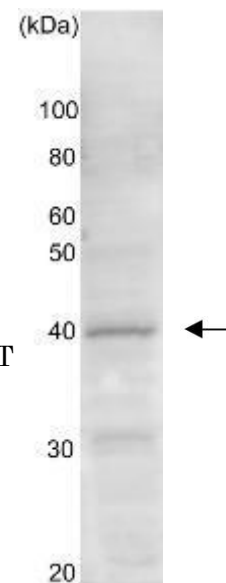


Fig.1 Western blot analysis of Gtr2 protein in the whole cell extract of *S. cerevisiae* (10 m g). Anti-Gtr2 antibody was used at 1/ 1,000 dilution.