

Anti-Cholera toxin antibody (Rabbit)

64-007 100 ul

Cholera toxin, a main enterotoxin, interacts with G proteins and increases cyclic AMP in the intestinal lining to open ion channels. As ions flow into the intestinal lumen (lining), body fluids (mostly water) flows out of the body due to osmosis leading to massive diarrhea as the fluid is expelled from the body.

Cholera toxin is a complex consisting of one molecule of A subunit (27.2 kD) and 5 molecules of B subunits (11.6 kD). After secretion, A subunit is proteolytically processed into A1 (22 kD) and A2 (5 kD) subunits which are held together by a disulfide bond. The toxin adsorbs to GM1 ganglioside on the surface of target cells by the B subunit and the A subunit is dissociated from the B subunit during penetration. The A subunit constitutively activates adenylyl cyclase activity of α subunit of Gs (a kind of GTP-binding protein).

Applications:

1. Western blotting (dilution: 1/2,000)
2. ELISA. Other applications have not been tested.

Immunogen: Cholera toxin and the toxoid purified from culture medium of *Vibrio cholerae* 569B strain

Form: Antiserum added with 0.05% sodium azide

Storage: Shipped at 4°C and stored at -20°C

Data Link: UniProt KB [Cholera toxin](#)

References:

1. Hirst TR and D'Souza JM In *The Comprehensive Sourcebook of Bacterial Protein Toxins* Alouf J and Popoff M ed. 3rd edn. p. 270-290 Academic Press (2006)
2. Finkelstein RA and LoSpalluto JJ "Pathogenesis of experimental cholera. Preparation and isolation of cholera toxin and cholera toxinoid." *J. Exp Med* **130**: 185-202 (1969) PMID: [4978880](#)

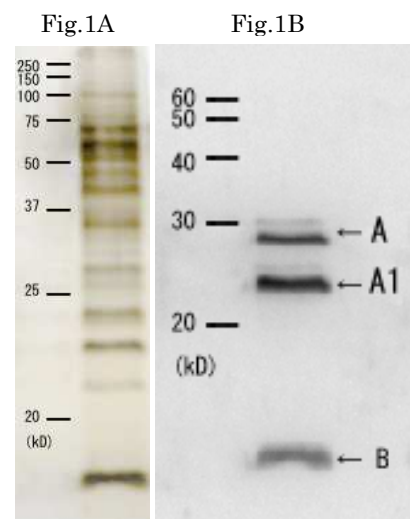


Fig.1 A SDS-PAGE analysis of culture medium of *Vibrio cholerae*. Culture medium of *Vibrio cholerae*, 569B strain was subjected to electrophoresis under reducing condition followed by silver-staining.

Fig.1 B Western blotting of culture medium of Cholera toxin.

Culture medium of *Vibrio cholerae* 569B strain was subjected to electrophoresis under reducing condition followed by Western blotting using this antibody (1/2000 dilution). A, A1 and B indicate the subunits A, A1 and B, respectively. A faint band above A is a precursor of A with signal peptide. A2 subunit (5 kD) is too small to be seen by this analysis.

Related Products: [#01-511 Cholera toxin](#), [#01-521 Cholera toxin A subunit](#), [#01-525 Cholera toxin B subunit](#)