

Anti-Rad22 (*S. pombe*) antibody, rabbit polyclonal

Product code	63-003
Size	50 µg
Storage	-20°C
Concentration	1.0 mg/ml
Buffer	PBS- with 50% glycerol
Purity	Purified IgG fraction with Rad22 conjugated with agarose beads from rabbit antiserum.
Immunogen	Recombinant full-size Rad22 protein of <i>S. pombe</i> Expressed in <i>E. coli</i> .
Isotype	Rabbit IgG
Reactivity	<i>Schizosaccharomyces pombe</i>
Special notes	N/A
Application	<ol style="list-style-type: none"> 1. Western blotting (x 2,000~5,000 dilution) 2. Immunoprecipitation 3. Immunofluorescence Staining 4. ELISA
Background	Rad22 protein of <i>Schizosaccharomyces pombe</i> (469 aa, 52 kDa) is a functional and structural homolog of <i>Saccharomyces cerevisiae</i> and human Rad52 proteins, which play a major role together with Rhp51 in genetic recombination and recombination repair, by mediating strand annealing reaction between homologous DNA strands.
Data Link	UniProtKB P36592 (RAD22_SCHPO) Entrez Gene: 2543086 <i>Schizosaccharomyces pombe</i>
Please note: All products are FOR RESEARCH USE ONLY. NOT FOR USE IN DIAGNOSTIC PROCEDURES. NOT FOR MILITARY USE.	

Data Images: 63-003 Anti-Rad22 (*S. pombe*) antibody, rabbit polyclonal

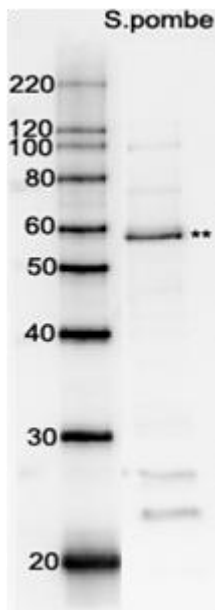


Fig.1 Western blot analysis of Rad22 in the whole cell extracts with affinity-purified antibody.

M: Molecular weight markers (kD)

Lane 1:Protein size markers (kDa) Lane 2:Extract of wild-type *S. pombe*

** indicates Rad22 protein band.

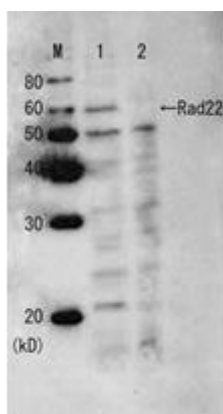


Fig.2. Western blot analysis of Rad22 protein in the whole cell extracts with anti-Rad22 serum before affinity purification.

M: Molecular weight markers (kD)

Lane1: Wild-type strain

Lane2: Rad22 deletion mutant strain

Reference

1. Lehmann AR “Molecular biology of DNA repair in the fission yeast *Schizosaccharomyces pombe*.”
Mutation Res **363**:147-161 Review (1996) PMID: [8765156](https://pubmed.ncbi.nlm.nih.gov/8765156/)