

Anti-E.coli RuvA antibody, rabbit serum

Product code	61-005
Size	100 µl
Storage	Store at 4°C for short term. For long term storage store at -20°C. Aliquot to avoid repeated freezing thawing.
Concentration	N/A
Buffer	0.05% sodium azide
Purity	Rabbit antiserum
Immunogen	Purified full-size recombinant RuvA protein (Ref.2)
Isotype	Rabbit IgG
Reactivity	E.coli RuvA
Special notes	N/A
Application	1. ELISA 2. Western blotting (x 3,000 dilution) (Fig.1) Other applications have not been tested.
Background	<p><i>E. coli</i> RuvA protein binds specifically to the Holliday structure which is the intermediate of recombination at the late stage of homologous recombination and recombination repair, and forms a complex with RuvB motor protein, allowing the migration of Holliday junction using ATP hydrolysis energy and expands the heteroduplex region. In solution, it forms a tetramer and binds to the cross-like DNA of the Holliday junction from below and above, holding it in between (1, 2).</p> <p>Using this antiserum in Western blotting, the band of 22kD corresponding to RuvA was obtained from the extract of <i>E. coli</i> cells (Fig.1).</p>
Data Link	UniProtKB P0A809 (RUVA_ECOLI)
Please note: All products are FOR RESEARCH USE ONLY. NOT FOR USE IN DIAGNOSTIC PROCEDURES. NOT FOR MILITARY USE.	

Data Images: 61-005 Anti-RuvA antibody, rabbit serum

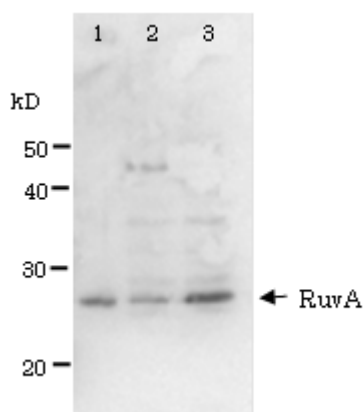


Fig1. Detection of RuvA (22kD) protein by Western blotting using this antibody.

lane1: RuvA protein 0.8ng

lane2: *E. coli* AB1157 crude extract

lane3: *E. coli* AB1157 *lexA* mutant crude extract

Expression of RuvA is enhanced by *lexA* mutation.

References:

1. Shinagawa H and Iwasaki H (1996) "Processing the holliday junction in homologous recombination" *Trends Biochem Sci* **21**:107-111 PMID: [8882584](#)
2. Iwasaki H *et al* (1992) "Escherichia coli RuvA and RuvB proteins specifically interact with Holliday junctions and promote branch migration" *Genes Dev* **6**:2214-2220 PMID: [1427081](#)

Related Products:

01-007 *E. coli* RuvA protein, functional

01-009 *E. coli* RuvB protein, functional

01-011 *E. coli* RuvC protein, functional

61-007 anti-RuvB antibody, rabbit serum

61-009 anti-RuvC antibody, rabbit serum