

Anti-Cdc22/RMM1 (*S. pombe*) antibody, rabbit polyclonal

Product code	63-011
Size	100 µg
Storage	-20°C
Concentration	1.0 mg/ml
Buffer	PBS ⁻ with 50% glycerol
Purity	Purified IgG fraction with immunogen peptide conjugated with agarose beads from rabbit antiserum.
Immunogen	Synthetic peptide, NVNPTDLWDWAE-C, corresponding to 571-582 residues of <i>S. pombe</i> Cdc22 protein.
Isotype	Rabbit IgG
Reactivity	<i>S. pombe</i> Cdc22 protein. Not tested in other species
Special notes	N/A
Application	1. Western blotting (1/1000) Other applications have not been tested.
Background	The <i>cdc22</i> gene of <i>S. pombe</i> encodes ribonucleoside-diphosphate reductase large chain (811 aa, 92 kDa) which forms heterodimer with the small chain. The heterodimer catalyzes the biosynthesis of deoxyribonucleotides from the corresponding ribonucleotides and provides the precursors necessary for DNA synthesis.
Data Link	UniProtKB P36602 (RIR1_SCHPO) PomBase cdc22 (SPAC1F7.05)
Please note: All products are FOR RESEARCH USE ONLY. NOT FOR USE IN DIAGNOSTIC PROCEDURES. NOT FOR MILITARY USE.	

Data Images: 63-011 Anti-Cdc22 /RMM1 (*S. pombe*) antibody, rabbit polyclonal

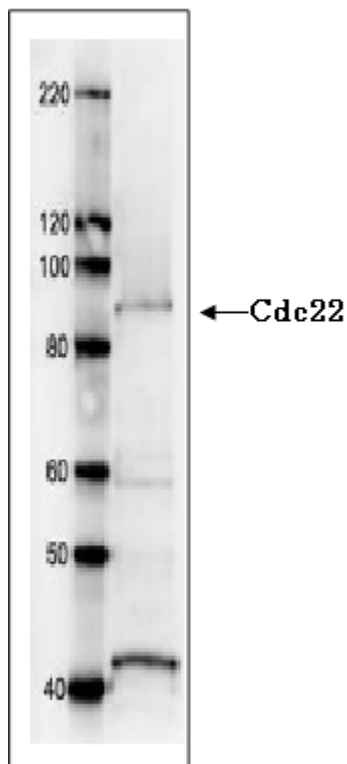


Fig. Western blot analysis with Cdc22 antibody.

Cdc22 protein (92 kDa) was detected by western blotting in *S. pombe* crude extract. 7.5 % SDS-PAGE was used. Anti-Cdc22 antibody was used at 1/1,000 dilution and secondary antibody, anti-rabbit IgG conjugated with HRP, was used at 1/10,000 dilution.

Reference: This antibody has not been in publication yet.