

Anti-Srb4 (*S. cerevisiae*) antibody, rabbit serum, ChIP grade

Product code	62-007
Size	100 µl
Storage	Store at 4°C for short term. For long term storage store at -20°C. Aliquot to avoid repeated freezing and thawing.
Concentration	N/A
Buffer	0.1% sodium azide
Purity	Rabbit antiserum
Immunogen	Recombinant full-size yeast His-tagged Srb4 protein (1-687 aa)
Isotype	Rabbit IgG
Reactivity	<i>S. cerevisiae</i> Srb4 protein
Special notes	N/A
Application	1. Western blotting (1/1,000~1/5,000 dilution) 2. Immunoprecipitation (assay dependent) 3. Chromatin Immunoprecipitation (assay dependent)
Background	Srb4 protein is subunit of the RNA polymerase II mediator complex; associates with core polymerase subunits to form the RNA polymerase II holoenzyme; required for basal RNA polymerase II transcription; homozygosity of the human MED17 L371P mutation is associated with infantile cerebral and cerebellar atrophy with poor myelination.
Data Link	SGD SPT3/YDR392W UniProtKB P32569 (MED17_YEAST)
Please note: All products are FOR RESEARCH USE ONLY. NOT FOR USE IN DIAGNOSTIC PROCEDURES. NOT FOR MILITARY USE.	

Data Images: 62-007 Anti-Srb4 (*S. cerevisiae*) antibody, rabbit serum, ChIP grade

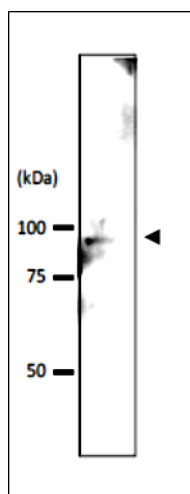


Fig.1. Detection of Srb4p in crude extract of *S. cerevisiae* by Western blotting

Extract of *S. cerevisiae* strain BY4741 (10 µg) was used. Tahe antibody was used at 1/1,000 dilution. IMMUNO SHOT (CosmoBio, Tokyo) was used as signal enhancer. Molecular mass of Srb4 protein is 78.5 kDa.

References: This antibody has not been used in publication yet.