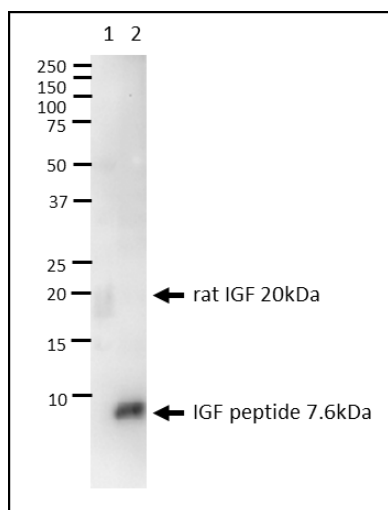


## Anti-rat IGF-2 antibody, mouse monoclonal (SIF2)

<b>Product code</b>	71-521
<b>Size</b>	100 µg
<b>Storage</b>	-20°C
<b>Concentration</b>	1.0 mg/ml
<b>Buffer</b>	PBS- with 50% glycerol
<b>Purity</b>	Purified IgG fraction with protein A from hybridoma cell culture medium
<b>Immunogen</b>	Rat Insulin-like Growth Factor II (rat IGF-2)
<b>Isotype</b>	mouse IgG1κ
<b>Reactivity</b>	rat, human IGF-2. Less than 10% cross-reactivity with human IGF-1 (Ref.1)
<b>Special notes</b>	N/A
<b>Application</b>	<ol style="list-style-type: none"> <li>1. Western blotting: (1µg/ml) run gel under non-reducing conditions</li> <li>2. Immunofluorescence staining: (1µg/ml) (Ref.2)</li> <li>3. Biological neutralization of IGF-2: 100 µg/ml of antibody inhibits the stimulatory effect of 100ng/ml of IGF-2 on DNA synthesis by human fibroblasts and sulfation by chick cartilage. (Ref.3)</li> </ol>
<b>Background</b>	<p>The insulin-like growth factors (IGFs) possess growth-promoting activity. Major fetal growth hormone in mammals. Plays a key role in regulating fetoplacental development. Insulin-like Growth Factor II (IGF-2) is influenced by placental lactogen.</p>
<b>Data Link</b>	UniProt <a href="#">P01346</a> (IGF2_RAT)
<p>Please note: All products are FOR RESEARCH USE ONLY. NOT FOR USE IN DIAGNOSTIC PROCEDURES. NOT FOR MILITARY USE.</p>	

**Data Images:** 71-521 Anti-rat IGF-2 antibody, mouse monoclonal (SIF2)



**Fig.1 Western Blot of IGF-2**

Applied sample; 1. 50 $\mu$ g of PC12 whole cell lysate

2. 0.1 $\mu$ g of IGF2 peptide (7.6kDa)

Roading sample buffer ; 2-Mercaptoethanol free

Primary antibody; 1 $\mu$ g/ml of anti-IGF-2 antibody (SIF2)

**Reference:** This product has been used in the following publications.

1. Suzuki T, *et al.* IGF-II-like immunoreactivity in human tissues, neuroendocrine tumors, and PC12 cells. *Diabetes Res Clin Pract.* 7 Suppl 1:S21-7. (1989) [PMID: 2680364](#)
2. Suzuki T, *Et al.* Immunocytochemical demonstration of IGF-II-like immunoreactivity in human paraganglioma of the craniocervical region. *Virchows Arch A Pathol Anat Histopathol* 414(6):515-21(1989). [PMID: 2499109](#) **IF**
3. Tanaka H, *et al.* Identification of a family of insulin-like growth factor II secreted by cultured rat epithelial-like cell line 18,54-SF: application of a monoclonal antibody. *Endocrinology.* 124(2):870-7 (1989) [PMID: 2463906](#) **Neutralization**