

Anti-Rad21 antibody, rabbit polyclonal, affinity purified

70-105 50 µg

Shipping and Storage: Shipped at 4°C or -20°C and store at -20°C.

Immunogen: Human Rad21 C-terminal peptide, C-ATPGPRFHII

Form: 1mg/ml in PBS- with 50% glycerol. Filter-sterilized. Azide- and carrier-free

Purity: Affinity purified with immunogen peptide from rabbit serum of immunized rabbit

Reactivity: Reacts with Rad21 of human, mouse and hamster.

Applications

- 1) Western blotting (1/2,000 dilution)
- 2) Immunofluorescence staining (1/100~1/500 dilution)

Background: Rad21 (631 aa, 71 kDa) is a cleavable component of cohesin complex, involved in chromosome cohesion during cell cycle, in DNA repair, and in apoptosis. The cohesin complex is required for the cohesion of sister chromatids after DNA replication. The cohesin complex apparently forms a large proteinaceous ring within which sister chromatids can be trapped. At metaphase-anaphase transition, this protein is cleaved by separase/ESPL1 and dissociates from chromatin, allowing sister chromatids to segregate.

Data Link: UniProtKB/Swiss-Prot [O60216](#) (RAD21_HUMAN)

Reference : This product has been described and used in the following reference.

Toyoda Y and Yanagida M. (2006) Coordinated Requirements of Human Topo II and Cohesin for Metaphase Centromere Alignment under Mad2-dependent Spindle Checkpoint Surveillance" *Mol. Biol. Cell.* 17: 2287-2302 (2006) PMID: [1446084](#)

WB, IF

DNA stained
with Hoechst

Rad21 stained
with anti-Rad21
antibody

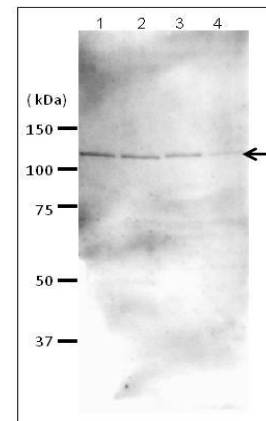
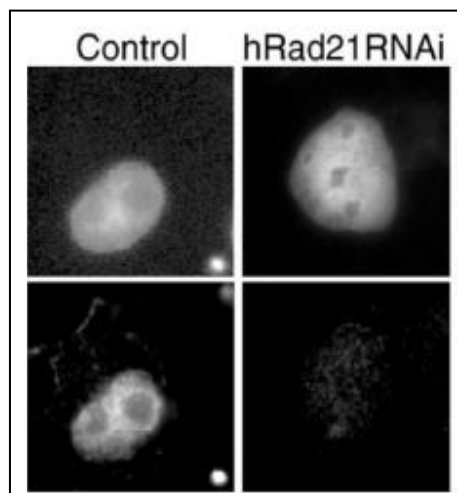


Fig.1 Western blot analysis of Rad21 in the whole cell extracts

Anti-Rad21 antibody was used at 1/2,000 dilution. Rad21 migrates as a ~120 kDa protein (Reference)

Samples: Crude extracts, 10~20 µg

1. HeLa (human)
2. MCF-7 (human)
3. NIH3T3 (mouse)
4. CHO (hamster)

Fig. 2 Immunofluorescence staining of Rad21.

Specific immuno-staining is confirmed by the disappearance of stained Rad21 in HeLa cells transfected with hRad21-specific RNAi (right-bottom figure). The cells are extracted in a buffer containing 0.5% Triton X-100 on ice before paraformaldehyde fixation.