

## Anti-Shugoshin 1 (*S. pombe*) antibody, rabbit polyclonal

63-154 100 µl

**Shipping and Storage:** Shipped at 4°C or -20°C and store at -20°C.

**Immunogen:** Recombinant Shugoshin 1 was used as immunogen for rabbit immunization and affinity purification.

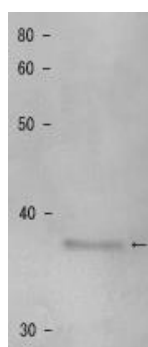
**Form:** 0.2 mg/ml affinity purified anti-Shugoshin 1 antibody in 1 mg/ml BSA, PBS<sup>-</sup>, 50% glycerol, filter-sterilized, azide free

### Applications

- 1) Western blotting (1,000 fold dilution)
- 2) Immunofluorescence staining (100 fold dilution)

**Background:** Shugoshin 1 (Sgo1), a meiosis-specific protein, protects centromeric Rec8 from degradation during first meiotic division (meiosis I) in fission yeast *Schizosaccharomyces pombe*. This protein appears at late prophase of meiosis I and is degraded at anaphase I.

**Data Link** UniProtKB/Swiss-Prot [Q9P7A0](#) (SGO1\_SCHPO)

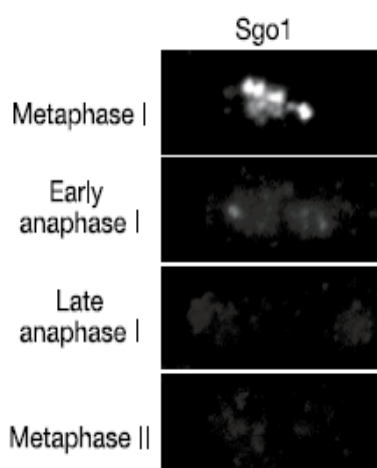


**Fig.1 Detection of shugoshin 1 protein by Western blotting.**

Sample: Extract of MP111 cells.

The antinody was diluted 1000 fold before use.

The 37 kD band corresponds to Shugoshin 1 protein.



**Fig.2 Immunostaining of Shugoshin 1 in synchronized diploid fission yeast.**

Anti-Shugoshin 1 antibody was used as primary antibody and Alexa-488-conjugated anti-rabbit IgG was used as secondary antibody.

**References:** This product was used in references 2 and 3.

1. Watanabe Y and Kitajima TS "Shugoshin protects cohesion complexes at centromeres" *Philos Trans R Soc Lond B Biol Sci* **360**: 515-521 (2005)  
Review PMID: [15897177](#)
2. Kitajima TS *et al* "The conserved kinetochore protein shugoshin protects centromeric cohesion during meiosis" *Nature* **427**: 510-517 (2004) PMID: [14730319](#)
3. Yamagishi Y *et al* "Heterochromatin links to centromeric protection by recruiting shugoshin" *Nature* **455**: 251-255 (2008) PMID: [18716626](#)

**Related product:** Anti-Swi6 (*S. pombe*) antibody, rabbit ([63-101](#), [63-102](#))