

## Anti-*Pasteurella multocida* Toxin antibody, rabbit polyclonal

64-105 200 µg

**Shipping and Storage:** Ship at 4°C or -20°C and store at -20°C. Do not freeze.

**Immunogen:** Purified recombinant *Pasteurella multocida* toxoid (His6-tagged at N-terminus of full-size PMT, BioAcademia 01-507)

**Form:** 2 mg/ml in PBS- with 50% glycerol. Filter sterilized. Azide- and carrier protein-free.

**Purity:** IgG, affinity-purified with protein A/G mix from rabbit antiserum.

**Reactivity:** Reacts with *P. multocida* Toxin,

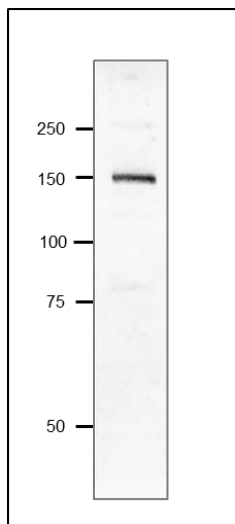
### Applications:

1. Western blotting (1/500-1/1,000 dilution)
2. Dot blot (assay dependent)
3. ELISA (assay dependent)

Other applications have not been tested.

**Background:** *Pasteurella multocida* toxin (PMT) is produced by a gram-negative bacillus, *Pasteurella multocida*. PMT activates the Gq and G<sub>12/13</sub> dependent signaling pathways. Gq and G<sub>12/13</sub> are alpha subunits of the GTP trimer bound protein of animal cells. This toxin binds to a ganglioside-type cell surface receptor, acts intracellularly after having been internalized through an endocytic pathway, and has pleiotropic effects on cell physiology.

**Data Link:** UniProtKB/Swiss-Prot [P17452](#) (TOXA\_PASMU)

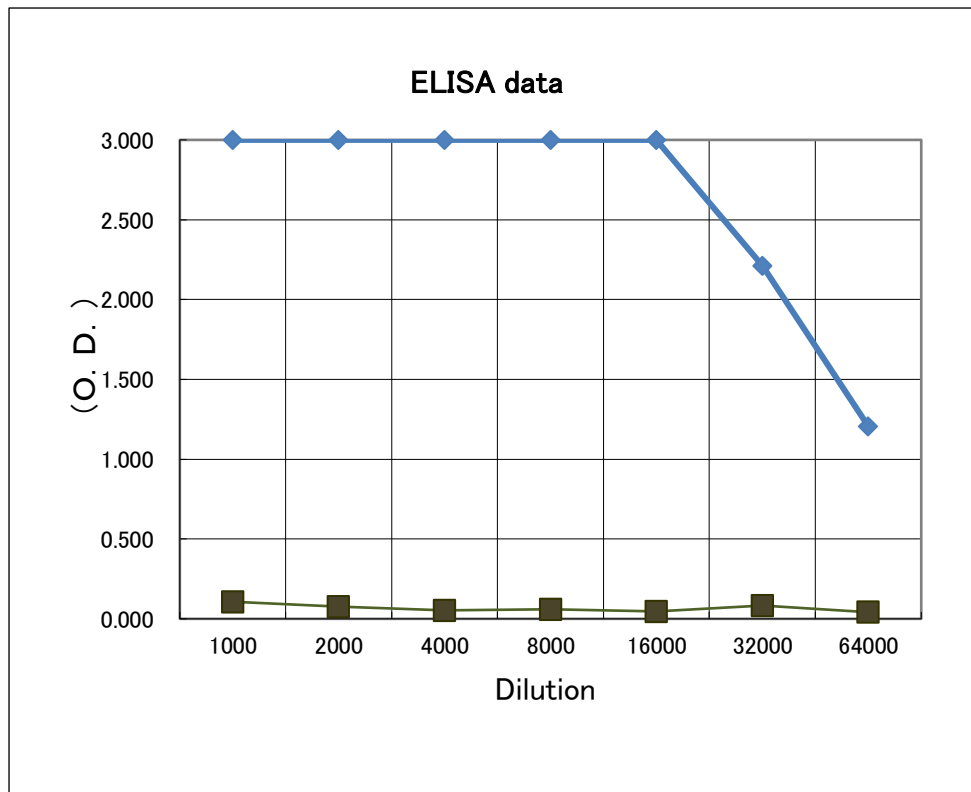


**Fig.1. Western blot of *P. multocida* Toxin.**

Sample: Recombinant *P. multocida* Toxin, 7.4 ng

Anti-PMT antibody was used at 1/1,000 dilution.

As second antibody, HRP conjugated goat anti-rabbit IgG (ab 97051) was used at 1/20,000 dilution.



**Fig.2. Indirect ELISA of *P. multocida* Toxin.**

Plate was coated with 0.2 µg of recombinant *P. multocida* toxin (BioAcademia 01-507) per well and 100 µl of anti-*P. multocida* toxin serum at the indicated dilution was added to each well and incubated. After washing, goat anti-rabbit-IgG conjugated with HRP was added as a secondary antibody. Color was developed with TMB as substrate. After washing, goat anti-rabbit-IgG conjugated with HRP was added as a secondary antibody. Color was developed with TMB as substrate. Black boxes are data with pre-immune serum.