

## Anti-Rb phospho-Ser795 antibody, mouse monoclonal (28B5)

71-171 100 µg

**Shipping and Storage:** Shipped at 4°C or -20°C and stored at -20°C.

**Immunogen:** A synthetic peptide containing phospho-Ser795 of human Rb

**Form:** Purified monoclonal antibody (IgG) 1mg/ml in PBS<sup>-</sup> with 50% glycerol, filter-sterilized

**Isotype:** Mouse IgG2a (κ)

**Reactivity:** Specific to human Rb phosphorylated at Ser795. Not tested for other species.

Can detect endogenous levels of Rb phosphorylated at Ser795 in most cell lines.

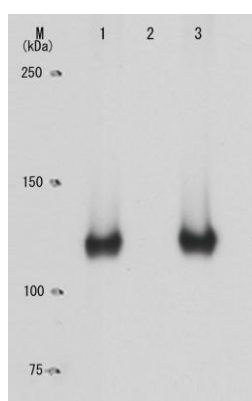
### Applications

1. Western blotting (~1ug/ml)
2. ELISA Other applications were not tested.

**Background:** Retinoblastoma protein (Rb), the tumor suppressor product of the retinoblastoma susceptibility gene, is a 110 kDa protein that functions as a negative regulator of the cell cycle by arresting cells in the G1 phase and halting inappropriate cell proliferation (1). At the transcriptional level, Rb protein exerts its growth suppressive function by binding to transcription factors including E2F1, PU1, ATF2, UBF, Elf-1 and c-Abl (2-4). Loss of Rb function leads to uncontrolled cell growth and tumor development and is found in all retinoblastomas and in a variety of other human malignancies. The ability of Rb protein to inhibit transcription and cell cycle progression is inactivated by phosphorylation, which is catalyzed by the cyclin-dependent protein kinases.

**Data Link** UniProtKB/Swiss-Prot [P06400](#) (RB\_HUMAN)

**Reference:** This antibody has not been used in publication yet.



**Fig.1 Specificity of the monoclonal antibody (28B5) to the phosphorylated Rb at Ser795 as demonstrated by Western blotting.**

Crude extracts of human lung carcinoma cell line H1299 transfected with plasmid expressing Myc-tagged wild-type Rb (lane 1), Rb (S795A) (lane 2) or Rb (T821A) were immuno-precipitated with anti-Myc antibody and the precipitates were analyzed by Western blotting with monoclonal antibody 28B5. (Data provided by Dr. Y. Inoue at the JFCR Cancer Research Institute, Tokyo)

**Related product:** [#71-173](#) anti-Rb phospho-Thr821 antibody, monoclonal (24A7)