

Anti-Srb4 (*S. cerevisiae*) antibody, rabbit serum, ChIP grade62-007 100 μ l**Shipping and Storage:** Ship at 4°C or -20°C and store at -20°C.**Immunogen:** Recombinant full-size yeast His-tagged Srb4 protein (1-687 aa)**Form:** Whole antiserum added with 0.1% sodium azide.**Reactivity:** *S. cerevisiae* Srb4 protein.**Applications**

1. Western blotting (1/1,000~1/5,000 dilution)
2. Immunoprecipitation (assay dependent)
3. Chromatin Immunoprecipitation (assay dependent)

Background: Srb4 protein is subunit of the RNA polymerase II mediator complex; associates with core polymerase subunits to form the RNA polymerase II holoenzyme; required for basal RNA polymerase II transcription; homozygosity of the human MED17 L371P mutation is associated with infantile cerebral and cerebellar atrophy with poor myelination

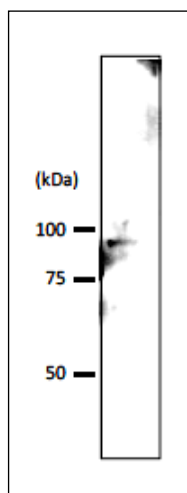
Data Link: [SGD SRB4/YER022W](#) *S. cerevisiae* Srb4 protein[SwissProt: P32569](#) *S. cerevisiae* [Entrez Gene: 856743](#) *Saccharomyces cerevisiae***References:** This antibody has not been used in publication

Fig.1. Detection of Srb4p in crude extract of *S. cerevisiae* by Western blotting

Extract of *S. cerevisiae* strain BY4741 (10 μ g) was used. The antibody was used at 1/1,000 dilution. IMMUNO SHOT (CosmoBio, Tokyo) was used as signal enhancer..

Molecular mass of Srb4 protein is 78.5 kDa.