

Anti-Spt3 (*S. cerevisiae*) antibody, rabbit polyclonal

62-005 100 µl

Shipping and Storage: Shipped at 4°C or -20°C and stored at -20°C

Immunogen Recombinant His-tagged *S. cerevisiae* Spt (1-200 aa).

Form: Whole rabbit antiserum added with 0.1% sodium azide.

Reactivity: *S. cerevisiae* Spt protein. Not tested with other species.

Applications:

1. Western blotting (1/2,000-1/5,000).
2. ELISA

Background: Spt3 is a subunit of the SAGA and SAGA-like transcriptional regulatory complexes; interacts with Spt15p to activate transcription of some RNA polymerase II-dependent genes, also functions to inhibit transcription at some promoters; relocalizes to the cytosol in response to hypoxia.

Data Link UniProt [P06844](#) (SPT3_YEAST), SGD [SPT3/YDR392W](#)

References: This antibody was used in the following publications.

1. Takahata S et al "Autonomous function of the amino-terminal inhibitory domain of TAF1 in transcriptional regulation" *Mol Cell Biol* **24**: 3089 -3099 (2004) PMID: [15060133](#) **WB**
2. Takahashi H et al. *Saccharomyces cerevisiae* Med9 comprises two functionally distinct domains that play different roles in transcriptional regulation. [Genes Cells](#). 2009 Jan;14(1):53-67. **WB**

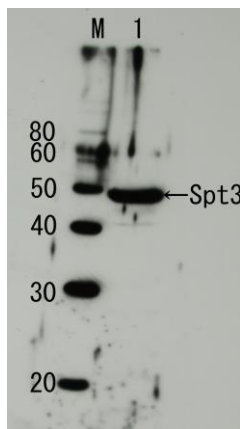


Fig.1 Detection of endogenous Spt3 by Western blotting using the Spt3 antibody.

Lane1: Extract of budding yeast

The antiserum was diluted 5,000 fold before use.