

Anti-Gal 11 (*S. cerevisiae*) antibody, rabbit serum

62-001 100 µl

Shipping and Storage: Sent at 4°C or -20°C and store at -20°C.

Immunogen: Recombinant of *S. cerevisiae* Gal11 protein (1-300aa) expressed in *E. coli*.

Form: Whole rabbit antiserum added with 0.09% sodium azide

Applications: Western blotting (1/500). Not tested with other applications

Background: Mediator is a protein complex which performs a very important role both in the transcription at the basal level which does not rely on transcription control factor, and in the transcription activating reaction that relies on the transcription control factor. It has the characteristic of binding to the 7 amino acid repeated structure (CTD) that exists in the C terminal of the biggest subunit of RNA polymerase II. 30 kinds of subunits have already been identified as its composing substances, but it is said that multiple kinds of complexes with various subunit compositions exist in the cells. **Gal11p** is one of the mediator subunits and is composed of 1081 amino acid residues (120 kDa).

Data Link SGD [GAL11/YOL051W](#)
UniProtKB [P19659](#)

References: This antibody has not been used in publication.

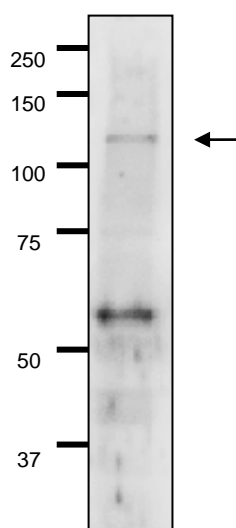


Fig.1 Detection of Gal11p by Western blotting using the Gal11p antibody in the whole cell extract of *S. cerevisiae*

The antiserum was used at 1/500 dilution.
7.5% gradient gel was used and wet system was used for blotting.