

## Anti- His 6 tag antibody, rabbit serum

60-051 100 µl

**Shipping and Storage:** Shipped at 4°C or -20°C and store at -20°C.

**Immunogen:** GSHHHHHHGCG synthetic peptide cross-linked to KLH with C-terminal Cystein.

**Form:** Antiserum added with 0.05% sodium azide

**Reactivity:** This antibody recognizes His6-tagged fusion proteins.

### Applications:

1. Western blotting (dilution: 1/1,000)
2. ELISA (assay dependent)

Not good for immunoprecipitation. Other applications have not been tested.

**Background:** Epitope tagging has become a powerful tool for detection and purification of expressed proteins. His6-epitope tag is especially useful because the tagged recombinant proteins can be easily purified by affinity chromatography with metal ion (e.g. Ni<sup>2+</sup>, Co<sup>2+</sup> etc.) conjugated resins. Due to their small size, His epitope tag does not affect the tagged protein's biochemical properties in most cases.

Anti-His epitope tag antibody is useful for identification of a recombinant protein tagged with 6X His at N-terminal, C-terminal and internal of the proteins.

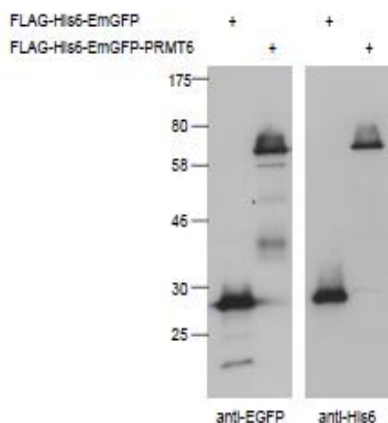


Fig.1 Detection of His-tagged proteins (FLAG-His6-EmGFP, FLAG-His6-EmGFP-PRMT6) in crude extract of 293T cells expressing the recombinant proteins with anti-EGFP antibody (left panel,) and anti-His6 antibody (right panel). The antibodies were used at 1,000 fold dilution.

**Reference:** Simpson RJ, Adams PD and Golemis EA “ Basic Methods in Protein Purification and Analysis.A laboratory Manual” ColdSpring Harbor Laboratory Press (2009) New York