

Anti-RanBP2 antibody, rabbit polyclonal

71-003 100 µl

Storage: Store at 4°C for short term. For long term storage store at -20°C. Aliquot to avoid repeated freezing and thawing.

Immunogen: synthetic peptide corresponding to 3 times-repeated sequences in RanBP2;
SKAPKSGFEGMFTKKE

Form: Affinity-purified with the antigen peptide. 0.5 mg/ml in PBS- with 50% glycerol.

Reactivity: human, mouse and rat. Not tested for other species

Applications

1. Western blotting (~ x 1,000 dilution)
2. Immunoprecipitation
3. Indirect immuno-staining of RanBP2 in cells

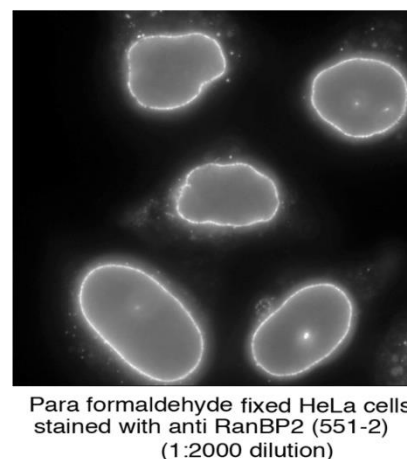
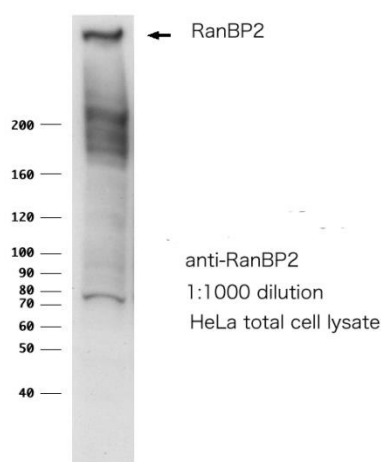
Background: RanBP2 was identified as a protein that interacts with small GTP-binding protein, Ran, and forms a large multiprotein complex involved in many biological processes such as mRNA processing, nuclear transport, cell cycle control and postmitotic nuclear reassembly. The protein is identified by Western blotting as an apparent molecular mass of 360 kD (see below). It is involved in nucleation of microtubules and controls of cell growth by interacting with many protein factors.

Data Link UniProtKB/Swiss-Prot [P49792](#) (RBP2_HUMAN)

Reference This product has been used for the following reference.

Yokoyama N *et al* "A giant nucleopore protein that binds Ran/TC4" *Nature* **376**:184-188 (1995) PMID: [7603572](#)

Yasuda K. Nuclear envelope localization of Ran-binding protein 2 and Ran-GTPase-activating protein 1 in psoriatic epidermal keratinocytes. [Exp Dermatol](#). 2014 Feb;23(2):119-24. PMID: 24438026.



Full size RanBP2 cDNA will be available upon request: 71-003-1 pBluescript KS(+)-RanBP2 cDNA



Please note: All products are FOR RESEARCH USE ONLY. NOT FOR USE IN DIAGNOSTIC PROCEDURES. NOT FOR MILITARY USE.